

# FORSTAR®

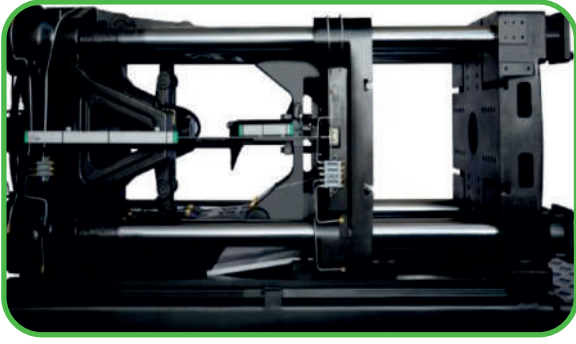
## PVC / PET / BAKALİT ENJEKSİYON MAKİNELERİ

### ÜST SEGMENT PLASTİK ENJEKSİYON MAKİNESİ

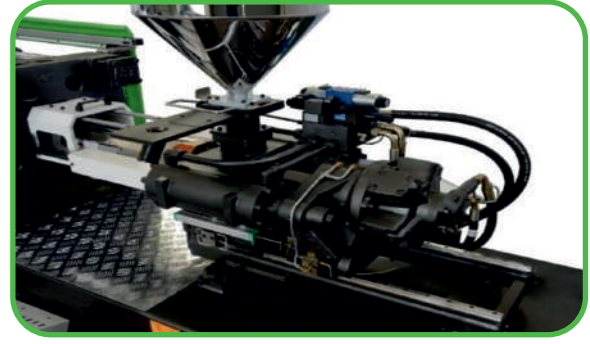
- ZAMANINDA TEKNİK SERVİS
- AVRUPA KONTROL SİSTEMİ
- 5 YIL GARANTİLİ DÖKÜM PLAKALAR
- KIRMA – ÇİLLER VB. YAN EKİPMANLARLA PAKET TESLİM İMKANI
- ÜST KALİTE – ÜSTÜN PERFORMANSLI MAKİNE



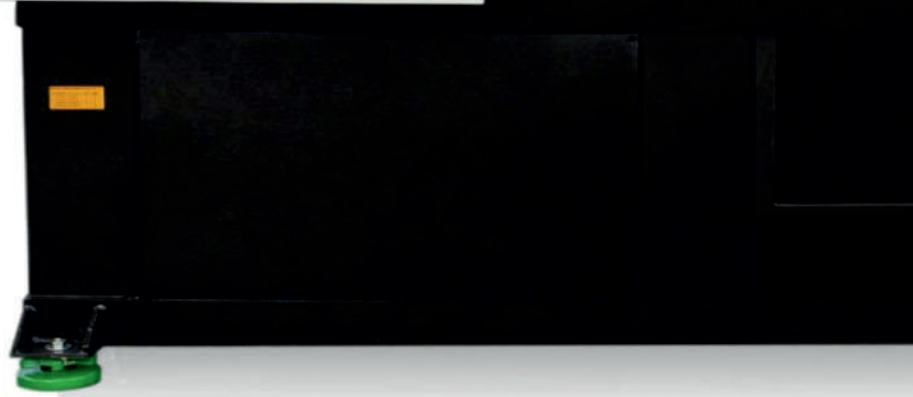
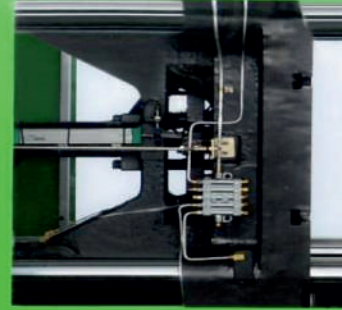
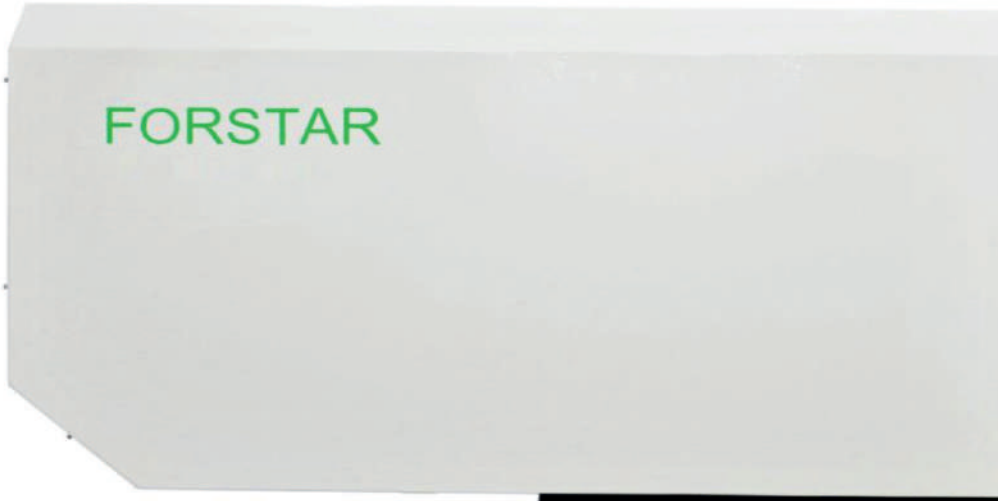
**MBK MAKİNA**  
Plastik Makina San.Tic.Ltd.Şti.



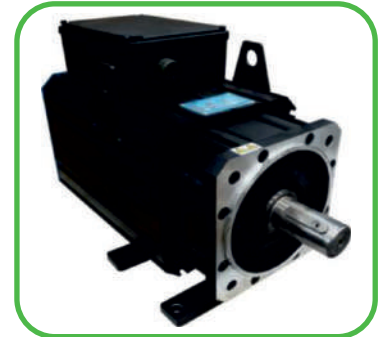
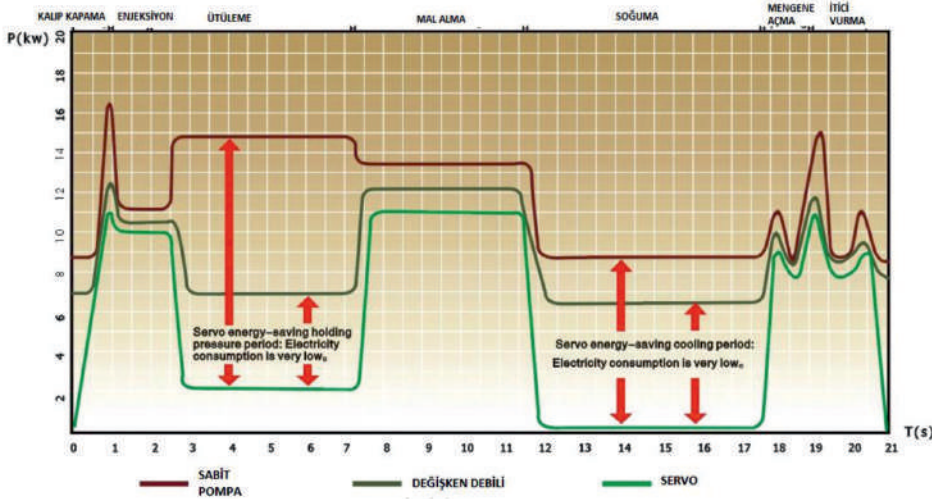
ÇİFT LİNEER KIZAK ÜSTÜNDE  
SÜRTÜNMEZ HAREKET



HIZLI VE PÜRÜZSÜZ ÇALIŞAN MENGENE  
ÜNİTESİ



ENERJİ TÜKETİM DİYAGRAMI

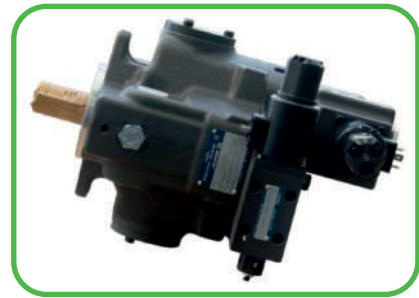


AC SERVO MOTOR  
SERVO motor ile hassas çalışma ve  
%80 elektrik tasarrufu.

- AVRUPA ÜRETİMİ KONTROL SİSTEMİ
- 175 BAR SİSTEM BASINCI
- 5 YIL DÖKÜM PLAKA GARANTİSİ
- ZAMANINDA TEKNİK SERVİS
- SOĞUTUCUYA TASARRUF ETTİREN VENTİL
- GRUP ÇİFT PİSTONLU
- STANDART ÜSTÜ R9 HİDROLİK HORTUMLAR

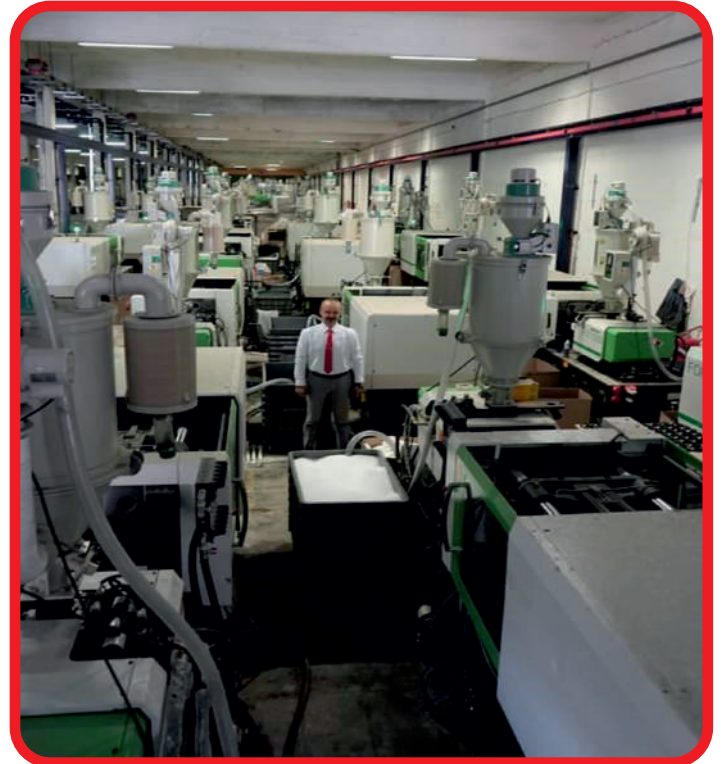
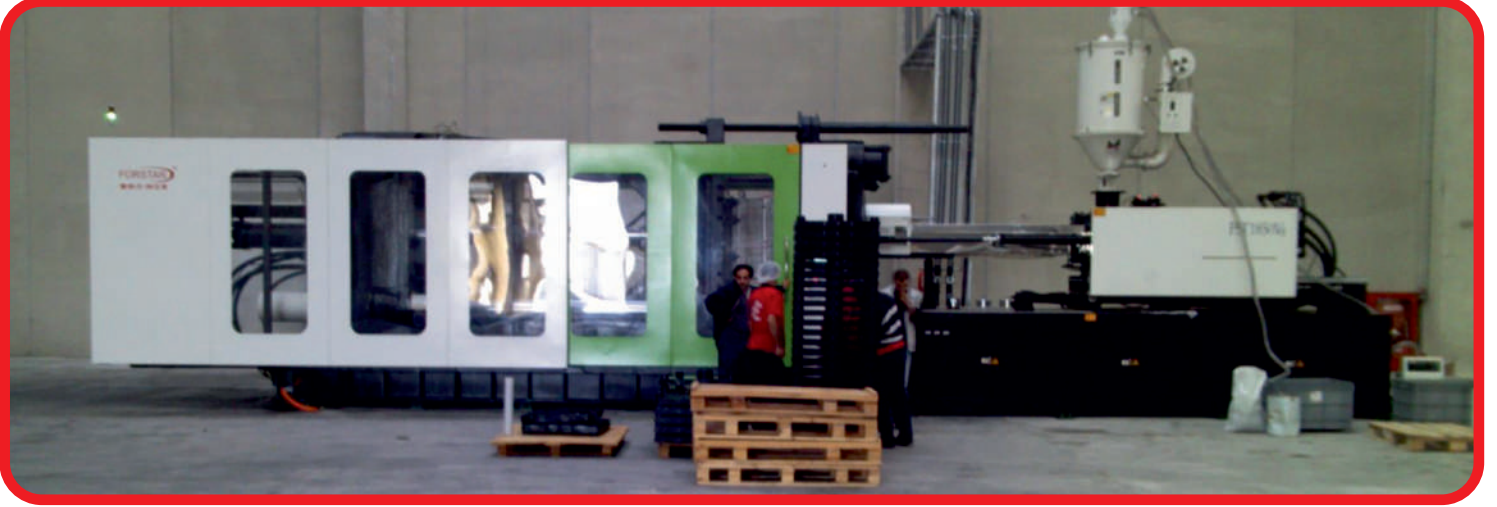


**ALÇAK BASINÇ KALIP KORUMA**  
Kilitleme sırasında Alçak Basınç Kalıp Koruma Valfi, PLC'deki girilen veriye göre hareket ederek, kalıp koruma fonksiyonunu daha duyarlı ve güvenilir bir şekilde gerçekleştirir.



**DEĞİŞKEN DEBİLİ ORANSAL POMPA**  
Değişken debili oransal pompa ile daha sessiz, hassas ve daha tasarruflu işlem.

# TÜRKİYE'DEKİ MAKİNELERİMİZ



# TEKNİK ÖZELLİKLER

ÖZELLİKLER	BİRİM	FC60 600 / 138	FC90 900 / 290	FC120 1200/410
<b>ENJEKSİYON ÜNİTESİ / INJECTION UNIT</b>				
VİDA ÇAPI / SCREW DIAMETER MM	MM	25-28-31	31-35-41	35-41-45
TEORİK ENJEKSİYON HACMİ / THEORETICAL INJECTION VOLUME	CM <sup>3</sup>	61-77-94	122-156-213	180-247-297
ENJEKSİYON GRAMAJI / ACTUAL SHOT WEIGHT	GRAM	58-71-87	113-143-198	165-227-273
ENJEKSİYON BASINCI / INJECTION PRESSURE	MPA	225-180-147	236-185-135	227-166-138
UZUNLUK/ÇAP ORANI - L/D RATIO		23.5:1/21:1/19:1	22.6:1/20:1/17.1:1	23.7:1/20.2:1/18.4:1
VİDA HIZI SERVO SERİSİ / SCREW SPEED SERVO SERIES	RPM	247	279	199
VİDA HIZI V SERİSİ / SCREW SPEED V SERIES	RPM	263	213	187
ENJEKSİYON ORANI SERVO SERİSİ / INJECTION RATE SERVO SERIES	MM/S	119.4	113.9	92
ENJEKSİYON ORANI V SERİSİ / INJECTION RATE V SERIES	MM/S	126.7	87	87.5
VİDA STROKU / SCREW STROKE	MM	125	162	187
<b>KİLİTLEME ÜNİTESİ / CLAMPING UNIT</b>				
KİLİTLEME GÜCÜ / CLAMPING FORCE	KN	600	900	1200
AÇMA STROKU / OPENING STROKE	MM	270	330	360
PLAKA ÖLÇÜLERİ / PLATEN SIZE	MMXMM	450X450	520X520	600X600
KOLON ARASI / SPACE BETWEEN TIE BARS	MMXMM	310X310	360X360	410X410
AZAMI AÇIKLIK / MAXIMUM DAY LIGHT	MM	570	690	810
KALIP KALINLIĞI (MİN. VE MAKS.) / MOLD THICKNESS (MIN-MAX)	MM	120-300	130-360	145-450
İTİCİ STROKU / HYDRAULIC EJECTION STROKE	MM	70	100	120
İTİCİ GÜCÜ / HYDRAULIC EJECTION FORCE	KN	31	34	42
İTİCİ ADEDİ / NUMBER OF EJECTOR		1	5	5
<b>GÜÇ ÜNİTESİ / POWER UNIT</b>				
SİSTEM BASINCI / SYSTEM PRESSURE	MPA	16	17.5	17.5
POMPA MOTOR GÜCÜ SERVO SERİSİ / PUMP MOTOR POWER SERVO SERIES	KW	9.5	11	11
POMPA MOTOR GÜCÜ V SERİSİ / PUMP MOTOR POWER V SERIES	KW	7.5	9	11
ISITMA KAPASİTESİ / HEATING CAPACITY	KW	4.5	6.5	8.8
SICAKLIK KONTROL BÖLGESİ ADEDİ / NUMBER OF TEMPERATURE CONTROL -ZONE		4	4	4
<b>GENEL ÜNİTE / OVERALL</b>				
TANK HACMİ / TANK VOLUME	LİTER	140	170	180
EBATLAR / DIMENSIONS	MMXMM	4.1X1.1X1.7	4.3X1.1X1.9	4.4X1.2X1.9
AĞIRLIK / WEIGHT	TON	2.3	3	3.7

ÖZELLİKLER	BİRİM	FC160 1600 / 620	FC200 2000 / 900	FC260 2600/1310
<b>ENJEKSİYON ÜNİTESİ / INJECTION UNIT</b>				
VİDA ÇAPI / SCREW DIAMETER MM	MM	41-45-51	45-51-60	51-60-66
TEORİK ENJEKSİYON HACMİ / THEORETICAL INJECTION VOLUME	CM <sup>3</sup>	277-334-429	374-480-664	562-777-941
ENJEKSİYON GRAMAJI / ACTUAL SHOT WEIGHT	GRAM	255-307-395	345-441-611	517-715-866
ENJEKSİYON BASINCI / INJECTION PRESSURE	MPA	223-185-144	239-187-134	234-169-140
UZUNLUK/ÇAP ORANI - L/D RATIO		22.1:1/20.2:1/17.8:1	23.4:1/20.5:1/17.4:1	25.1:1/21.3:1/19.4:1
VİDA HIZI SERVO SERİSİ / SCREW SPEED SERVO SERIES	RPM	198	165	174
VİDA HIZI V SERİSİ / SCREW SPEED V SERIES	RPM	204	171	183
ENJEKSİYON ORANI SERVO SERİSİ / INJECTION RATE SERVO SERIES	MM/S	78.3	75.7	85
ENJEKSİYON ORANI V SERİSİ / INJECTION RATE V SERIES	MM/S	81	78.7	89.5
VİDA STROKU / SCREW STROKE	MM	210	235	275
<b>KİLİTLEME ÜNİTESİ / CLAMPING UNIT</b>				
KİLİTLEME GÜCÜ / CLAMPING FORCE	KN	1600	2000	2600
AÇMA STROKU / OPENING STROKE	MM	420	480	530
PLAKA ÖLÇÜLERİ / PLATEN SIZE	MMXMM	670X670	765X765	840X840
KOLON ARASI / SPACE BETWEEN TIE BARS	MMXMM	460X460	510X510	570X570
AZAMI AÇIKLIK / MAXIMUM DAY LIGHT	MM	920	1030	1130
KALIP KALINLIĞI (MİN. VE MAKS.) / MOLD THICKNESS (MIN-MAX)	MM	160-500	180-550	195-600
İTİCİ STROKU / HYDRAULIC EJECTION STROKE	MM	140	150	180
İTİCİ GÜCÜ / HYDRAULIC EJECTION FORCE	KN	42	67	77
İTİCİ ADEDİ / NUMBER OF EJECTOR		5	5	13
<b>GÜÇ ÜNİTESİ / POWER UNIT</b>				
SİSTEM BASINCI / SYSTEM PRESSURE	MPA	17.5	17.5	17.5
POMPA MOTOR GÜCÜ SERVO SERİSİ / PUMP MOTOR POWER SERVO SERIES	KW	14	17	24
POMPA MOTOR GÜCÜ V SERİSİ / PUMP MOTOR POWER V SERIES	KW	15	18.5	22
ISITMA KAPASİTESİ / HEATING CAPACITY	KW	10.9	14	18.3
SICAKLIK KONTROL BÖLGESİ ADEDİ / NUMBER OF TEMPERATURE CONTROL -ZONE		4	4	5
<b>GENEL ÜNİTE / OVERALL</b>				
TANK HACMİ / TANK VOLUME	LİTER	230	320	440
EBATLAR / DIMENSIONS	MMXMM	4.9X1.3X2.0	5.3X1.3X2.1	6.2X1.4X2.2
AĞIRLIK / WEIGHT	TON	4.5	6.2	9

# TEKNİK ÖZELLİKLER

ÖZELLİKLER	BİRİM	FC320 3200 / 1970	FC400 4000 / 2625	FC480 4800 / 3680
<b>ENJEKSİYON ÜNİTESİ / INJECTION UNIT</b>				
VİDA ÇAPI / SCREW DIAMETER MM	MM	60-66-74	66-74-82	74-82-88
TEORİK ENJEKSİYON HACMİ / THEORETICAL INJECTION VOLUME	CM <sup>3</sup>	904-1094-1376	1180-1483-1822	1720-2112-2432
ENJEKSİYON GRAMAJI / ACTUAL SHOT WEIGHT	GRAM	832-1007-1266	1086-1365-1676	1582-1943-2237
ENJEKSİYON BASINCI / INJECTION PRESSURE	MPA	218-180-143	223-177-144	214-174-151
UZUNLUK/ÇAP ORANI - L/D RATIO		23.1:1/21:1/18.8:1	23.5:1/21:1/19.6:1	23.3:1/21:1/19.6:1
VİDA HIZI SERVO SERİSİ / SCREW SPEED SERVO SERIES	RPM	198	153	172
VİDA HIZI V SERİSİ / SCREW SPEED V SERIES	RPM	176	152	167
ENJEKSİYON ORANI SERVO SERİSİ / INJECTION RATE SERVO SERIES	MM/S	93.4	82	86
ENJEKSİYON ORANI V SERİSİ / INJECTION RATE V SERIES	MM/S	83.2	81	84.5
VİDA STROKU / SCREW STROKE	MM	320	345	400
<b>KİLİTLEME ÜNİTESİ / CLAMPING UNIT</b>				
KİLİTLEME GÜCÜ / CLAMPING FORCE	KN	3200	4000	4800
AÇMA STROKU / OPENING STROKE	MM	600	670	770
PLAKA ÖLÇÜLERİ / PLATEN SIZE	MMXMM	940X940	1050X1050	1150X1150
KOLON ARASI / SPACE BETWEEN TIE BARS	MMXMM	660X660	730X730	810X810
AZAMI AÇIKLIK / MAXIMUM DAY LIGHT	MM	1260	1420	1590
KALIP KALINLIĞI (MİN. VE MAKS.) / MOLD THICKNESS (MIN-MAX)	MM	220-660	250-750	300-820
İTİCİ STROKU / HYDRAULIC EJECTION STROKE	MM	180	215	250
İTİCİ GÜCÜ / HYDRAULIC EJECTION FORCE	KN	77	111	111
İTİCİ ADEDİ / NUMBER OF EJECTOR		13	13	13
<b>GÜÇ ÜNİTESİ / POWER UNIT</b>				
SİSTEM BASINCI / SYSTEM PRESSURE	MPA	17.5	17.5	17.5
POMPA MOTOR GÜCÜ SERVO SERİSİ / PUMP MOTOR POWER SERVO SERIES	KW	30	34	24X2
POMPA MOTOR GÜCÜ V SERİSİ / PUMP MOTOR POWER V SERIES	KW	30	37	45
ISITMA KAPASİTESİ / HEATING CAPACITY	KW	19.8	21.5	30
SICAKLIK KONTROL BÖLGESİ ADEDİ / NUMBER OF TEMPERATURE CONTROL -ZONE		5	5	6
<b>GENEL ÜNİTE / OVERALL</b>				
TANK HACMİ / TANK VOLUME	LİTER	540	580	750
EBATLAR / DIMENSIONS	MMXMM	6.6X1.6X2.5	7.6X1.8X2.1	8.2X1.9X2.2
AĞIRLIK / WEIGHT	TON	11	16	20

ÖZELLİKLER	BİRİM	FC560 5600 / 3680	FC650 6500 / 4975	FC750 7500 / 4975
<b>ENJEKSİYON ÜNİTESİ / INJECTION UNIT</b>				
VİDA ÇAPI / SCREW DIAMETER MM	MM	74-82-88	80-90-100	90-100-110
TEORİK ENJEKSİYON HACMİ / THEORETICAL INJECTION VOLUME	CM <sup>3</sup>	1720-2112-2432	2136-2702-3336	2702-3336-4036
ENJEKSİYON GRAMAJI / ACTUAL SHOT WEIGHT	GRAM	1582-1943-2237	1965-2487-3069	2487-3069-3713
ENJEKSİYON BASINCI / INJECTION PRESSURE	MPA	214-174-151	233-184-149	184-149-123
UZUNLUK/ÇAP ORANI - L/D RATIO		23.:3:1/21:1/19.6:1	24.8:1/22:1/19.8:1	22:1/19.8:1/18.5:1
VİDA HIZI SERVO SERİSİ / SCREW SPEED SERVO SERIES	RPM	172	163	179
VİDA HIZI V SERİSİ / SCREW SPEED V SERIES	RPM	167	-	-
ENJEKSİYON ORANI SERVO SERİSİ / INJECTION RATE SERVO SERIES	MM/S	86	-	-
ENJEKSİYON ORANI V SERİSİ / INJECTION RATE V SERIES	MM/S	84.5		
VİDA STROKU / SCREW STROKE	MM	400	425	425
<b>KİLİTLEME ÜNİTESİ / CLAMPING UNIT</b>				
KİLİTLEME GÜCÜ / CLAMPING FORCE	KN	5600	6500	7500
AÇMA STROKU / OPENING STROKE	MM	835	920	920
PLAKA ÖLÇÜLERİ / PLATEN SIZE	MMXMM	1220X1220	1310X1310	1310X1310
KOLON ARASI / SPACE BETWEEN TIE BARS	MMXMM	855X855	900X900	900X900
AZAMI AÇIKLIK / MAXIMUM DAY LIGHT	MM	1685	1830	1830
KALIP KALINLIĞI (MİN. VE MAKS.) / MOLD THICKNESS (MIN-MAX)	MM	330-850	350-910	350-910
İTİCİ STROKU / HYDRAULIC EJECTION STROKE	MM	250	182	182
İTİCİ GÜCÜ / HYDRAULIC EJECTION FORCE	KN	166	265	265
İTİCİ ADEDİ / NUMBER OF EJECTOR		13	13	13
<b>GÜÇ ÜNİTESİ / POWER UNIT</b>				
SİSTEM BASINCI / SYSTEM PRESSURE	MPA	17.5	17.5	17.5
POMPA MOTOR GÜCÜ SERVO SERİSİ / PUMP MOTOR POWER SERVO SERIES	KW	24x2 & 45	30+24	30+24
POMPA MOTOR GÜCÜ V SERİSİ / PUMP MOTOR POWER V SERIES	KW	45		
ISITMA KAPASİTESİ / HEATING CAPACITY	KW	30	36	36
SICAKLIK KONTROL BÖLGESİ ADEDİ / NUMBER OF TEMPERATURE CONTROL -ZONE		6	6	6
<b>GENEL ÜNİTE / OVERALL</b>				
TANK HACMİ / TANK VOLUME	LİTER	800	950	980
EBATLAR / DIMENSIONS	MMXMM	8.6 x 2.0 x 2.2	9.4X2.0X2.3	8.2X2.0 X2.3
AĞIRLIK / WEIGHT	TON	22	27	29

# TEKNİK ÖZELLİKLER

ÖZELLİKLER	BİRİM	FC850 8500 / 7225	FC950 9500 / 7225	FC1050 10500 / 9615
<b>ENJEKSİYON ÜNİTESİ / INJECTION UNIT</b>				
VİDA ÇAPI / SCREW DIAMETER MM	MM	90-100-110	100-110-120	100-110-120
TEORİK ENJEKSİYON HACMİ / THEORETICAL INJECTION VOLUME	CM3	3179-3925-4749	3925-4749-5651	4318-5224-6217
ENJEKSİYON GRAMAJI / ACTUAL SHOT WEIGHT	GRAM	2926-3611-4369	3611-4369-5200	3972-4806-5720
ENJEKSİYON BASINCI / INJECTION PRESSURE	MPA	227-184-152	184-152-128	222-184-154
UZUNLUK/ÇAP ORANI - L/D RATIO		24.4:1/22:1/20:1	22:1/20:1/18.5:1	24.2:1/22:1/20.2:1
VİDA HIZI SERVO SERİSİ / SCREW SPEED SERVO SERIES	RPM	140	160	117
VİDA STROKU / SCREW STROKE	MM	500	500	550
<b>KİLİTLEME ÜNİTESİ / CLAMPING UNIT</b>				
KİLİTLEME GÜCÜ / CLAMPING FORCE	KN	8500	9500	10500
AÇMA STROKU / OPENING STROKE	MM	1025	1025	1150
PLAKA ÖLÇÜLERİ / PLATEN SIZE	MMXMM	1570X1470	1570X1470	1710X1610
KOLON ARASI / SPACE BETWEEN TIE BARS	MMXMM	1100X1000	1100X1000	1200X1100
AZAMİ AÇIKLIK / MAXIMUM DAY LIGHT	MM	2100	2100	2350
KALIP KALINLIĞI (MİN. VE MAKS.) / MOLD THICKNESS (MIN-MAX)	MM	400-1075	400-1075	450-1200
İTİCİ STROKU / HYDRAULIC EJECTION STROKE	MM	269	269	269
İTİCİ GÜCÜ / HYDRAULIC EJECTION FORCE	KN	320	320	350
İTİCİ ADEDİ / NUMBER OF EJECTOR		21	21	21
<b>GÜÇ ÜNİTESİ / POWER UNIT</b>				
SİSTEM BASINCI / SYSTEM PRESSURE	MPA	17.5	17.5	17.5
POMPA MOTOR GÜCÜ SERVO SERİSİ / PUMP MOTOR POWER SERVO SERIES	KW	34X2	40X2	30X2+24
ISITMA KAPASİTESİ / HEATING CAPACITY	KW	48	48	55
SICAKLIK KONTROL BÖLGESİ ADEDİ / NUMBER OF TEMPERATURE CONTROL -ZONE		7	7	7
<b>GENEL ÜNİTE / OVERALL</b>				
TANK HACMİ / TANK VOLUME	LİTER	1150	1180	1450
EBATLAR / DIMENSIONS	MMXMM	10.4 x 2.5 x 2.8	10.4X2.5X2.8	11.3X2.7X3.0
AĞIRLIK / WEIGHT	TON	45	47	51

ÖZELLİKLER	BİRİM	FC1200 12000 / 9615	FC1350 13500 / 12485	FC1500 15000 / 12485
<b>ENJEKSİYON ÜNİTESİ / INJECTION UNIT</b>				
VİDA ÇAPI / SCREW DIAMETER MM	MM	110-120-130	110-120-130	120-130-140
TEORİK ENJEKSİYON HACMİ / THEORETICAL INJECTION VOLUME	CM3	5224-6217-7296	5699-6782-7960	6782-7960-9231
ENJEKSİYON GRAMAJI / ACTUAL SHOT WEIGHT	GRAM	4806-5720-6712	5243-6240-7323	6240-7323-8492
ENJEKSİYON BASINCI / INJECTION PRESSURE	MPA	184-154-134	219-184-157	184-157-135
UZUNLUK/ÇAP ORANI - L/D RATIO		22:1/20.2:1/18.6:1	24:1/22:1/20.3:1	22:1/20.3:1/18.9:1
VİDA HIZI SERVO SERİSİ / SCREW SPEED SERVO SERIES	RPM	128	111	122
VİDA STROKU / SCREW STROKE	MM	550	600	600
<b>KİLİTLEME ÜNİTESİ / CLAMPING UNIT</b>				
KİLİTLEME GÜCÜ / CLAMPING FORCE	KN	12000	13500	15000
AÇMA STROKU / OPENING STROKE	MM	1150	1300	1300
PLAKA ÖLÇÜLERİ / PLATEN SIZE	MMXMM	1710X1610	1950X1850	1950X1850
KOLON ARASI / SPACE BETWEEN TIE BARS	MMXMM	1200X1100	1350X1250	1350X1250
AZAMİ AÇIKLIK / MAXIMUM DAY LIGHT	MM	2350	2650	2650
KALIP KALINLIĞI (MİN. VE MAKS.) / MOLD THICKNESS (MIN-MAX)	MM	450-1200	600-1350	600-1350
İTİCİ STROKU / HYDRAULIC EJECTION STROKE	MM	269	309	309
İTİCİ GÜCÜ / HYDRAULIC EJECTION FORCE	KN	350	380	380
İTİCİ ADEDİ / NUMBER OF EJECTOR		21	25	25
<b>GÜÇ ÜNİTESİ / POWER UNIT</b>				
SİSTEM BASINCI / SYSTEM PRESSURE	MPA	17.5	17.5	17.5
POMPA MOTOR GÜCÜ SERVO SERİSİ / PUMP MOTOR POWER SERVO SERIES	KW	34X2+24	30X3	34X3
ISITMA KAPASİTESİ / HEATING CAPACITY	KW	55	62	62
SICAKLIK KONTROL BÖLGESİ ADEDİ / NUMBER OF TEMPERATURE CONTROL -ZONE		7	7	7
<b>GENEL ÜNİTE / OVERALL</b>				
TANK HACMİ / TANK VOLUME	LİTER	1480	1580	1610
EBATLAR / DIMENSIONS	MMXMM	11.3x 2.7 x 3.0	12.7X3.0X3.0	12.7X3.0X3.0
AĞIRLIK / WEIGHT	TON	53	75	77

# TEKNİK ÖZELLİKLER

ÖZELLİKLER	BİRİM	FC1850 18500 / 18100	FC2000 20000 / 18100	FC2200 22000 / 22795
<b>ENJEKSİYON ÜNİTESİ / INJECTION UNIT</b>				
VİDA ÇAPI / SCREW DIAMETER MM	MM	130-140-150	140-150-165	140-150-165
TEORİK ENJEKSİYON HACMİ / THEORETICAL INJECTION VOLUME	CM3	9291-10776-12370	10776-12370-14968	11545-13253-16036
ENJEKSİYON GRAMAJI / ACTUAL SHOT WEIGHT	GRAM	8548-9914-11380	9914-11380-13770	10621-12193-14753
ENJEKSİYON BASINCI / INJECTION PRESSURE	MPA	195-168-146	168-146-120	196-172-142
UZUNLUK/ÇAP ORANI - L/D RATIO		23.7:1/22.1/20.4:1	22.1/20.4:1/18.5:1	23.5:1/22.1/20.6:1
VİDA HIZI SERVO SERİSİ / SCREW SPEED SERVO SERIES	RPM	100	110	92.6
VİDA STROKU / SCREW STROKE	MM	700	700	750
<b>KİLİTLEME ÜNİTESİ / CLAMPING UNIT</b>				
KİLİTLEME GÜCÜ / CLAMPING FORCE	KN	18500	20000	22000
AÇMA STROKU / OPENING STROKE	MM	1550	1550	1700
PLAKA ÖLÇÜLERİ / PLATEN SIZE	MMXMM	2270X2170	2270X2170	2530X2430
KOLON ARASI / SPACE BETWEEN TIE BARS	MMXMM	1530X1430	1530X1430	1800X1600
AZAMI AÇIKLIK / MAXIMUM DAY LIGHT	MM	3150	3150	3500
KALIP KALINLIĞI (MİN. VE MAKS.) / MOLD THICKNESS (MIN-MAX)	MM	800-1600	800-1600	900-1800
İTİCİ STROKU / HYDRAULIC EJECTION STROKE	MM	309	309	470
İTİCİ GÜCÜ / HYDRAULIC EJECTION FORCE	KN	380	380	420
İTİCİ ADEDİ / NUMBER OF EJECTOR		29	29	29
<b>GÜÇ ÜNİTESİ / POWER UNIT</b>				
SİSTEM BASINCI / SYSTEM PRESSURE	MPA	17.5	17.5	17.5
POMPA MOTOR GÜCÜ SERVO SERİSİ / PUMP MOTOR POWER SERVO SERIES	KW	30X4	34X4	30X5
ISITMA KAPAŞİTESİ / HEATING CAPACITY	KW	78	78	110
SICAKLIK KONTROL BÖLGESİ ADEDİ / NUMBER OF TEMPERATURE CONTROL -ZONE		7	8	8
<b>GENEL ÜNİTE / OVERALL</b>				
TANK HACMİ / TANK VOLUME	LİTER	2080	2110	2600
EBATLAR / DIMENSIONS	MXMXM	15X3.5X3.3	15X3.5X3.3	16X3.9X3.6
AĞIRLIK / WEIGHT	TON	115	117	155

ÖZELLİKLER	BİRİM	FC2400 24000 / 22795	FC2800 28000 / 37228	FC3000 15000 / 12485
<b>ENJEKSİYON ÜNİTESİ / INJECTION UNIT</b>				
VİDA ÇAPI / SCREW DIAMETER MM	MM	150-165-180	165-180-190	180-190-200
TEORİK ENJEKSİYON HACMİ / THEORETICAL INJECTION VOLUME	CM3	13253-16036-19082	20313-24174-26936	24174-26936-29846
ENJEKSİYON GRAMAJI / ACTUAL SHOT WEIGHT	GRAM	12193-14753-17555	18688-22240-24781	22240-24781-27458
ENJEKSİYON BASINCI / INJECTION PRESSURE	MPA	172-142-119	183-154-138	154-138-125
UZUNLUK/ÇAP ORANI - L/D RATIO		22.1/20.6:1/19:1	24.2:1/22.1/20.2:1	22.1/20.2:1/19.2:1
VİDA HIZI SERVO SERİSİ / SCREW SPEED SERVO SERIES	RPM	101	80	88
VİDA STROKU / SCREW STROKE	MM	750	950	950
<b>KİLİTLEME ÜNİTESİ / CLAMPING UNIT</b>				
KİLİTLEME GÜCÜ / CLAMPING FORCE	KN	24000	28000	30000
AÇMA STROKU / OPENING STROKE	MM	1700	1900	1900
PLAKA ÖLÇÜLERİ / PLATEN SIZE	MMXMM	2530X2430	2850X2700	2850X2700
KOLON ARASI / SPACE BETWEEN TIE BARS	MMXMM	1800X1600	1900X1700	1900X1700
AZAMI AÇIKLIK / MAXIMUM DAY LIGHT	MM	3500	3750	3750
KALIP KALINLIĞI (MİN. VE MAKS.) / MOLD THICKNESS (MIN-MAX)	MM	900-1800	900-1850	950-1850
İTİCİ STROKU / HYDRAULIC EJECTION STROKE	MM	470	470	470
İTİCİ GÜCÜ / HYDRAULIC EJECTION FORCE	KN	420	420	420
İTİCİ ADEDİ / NUMBER OF EJECTOR		29	29	29
<b>GÜÇ ÜNİTESİ / POWER UNIT</b>				
SİSTEM BASINCI / SYSTEM PRESSURE	MPA	17.5	17.5	17.5
POMPA MOTOR GÜCÜ SERVO SERİSİ / PUMP MOTOR POWER SERVO SERIES	KW	34X5	30X6	34X6
ISITMA KAPAŞİTESİ / HEATING CAPACITY	KW	110	121	121
SICAKLIK KONTROL BÖLGESİ ADEDİ / NUMBER OF TEMPERATURE CONTROL -ZONE		8	8	8
<b>GENEL ÜNİTE / OVERALL</b>				
TANK HACMİ / TANK VOLUME	LİTER	2630	3100	3130
EBATLAR / DIMENSIONS	MXMXM	16X3.9X3.6	18X4.2X3.8	18X4.2X3.8
AĞIRLIK / WEIGHT	TON	157	195	200





## FORSTAR PET SERİSİ TEKNİK ÖZELLİKLER

ÖZELLİKLER	BİRİM	KT120VPET	KT160VPET	KT200VPET	KT260VPET	KT320VPET	KT400VPET	KT480VPET
<b>ENJEKSİYON ÜNİTESİ / INJECTION UNIT</b>								
VİDA ÇAPI / SCREW DIAMETER	MM	51	60	66	74	82	88	100
TEORİK ENJEKSİYON HACMİ / THEORETICAL INJECTION VOLUME	CM <sup>3</sup>	297	429	664	941	1376	1822	2432
ENJEKSİYON AĞIRLIĞI (PET) / THEORITICAL SHOT VOLUME (PET)	GRAM	374	540	836	1186	1734	2296	3065
ENJEKSİYON BASINCI / INJECTION PRESSURE	MPA	138	144	134	140	143	144	151
UZUNLUK/ÇAP ORANI - L/D RATIO		22	22	22	22	22	22	22
VİDA HIZI / SCREW SPEED	RPM	187	204	171	183	176	153	165
VİDA STROKU / SCREW STROKE	MM	187	210	235	275	320	345	400
<b>KİLİTLEME ÜNİTESİ / CLAMPING UNIT</b>								
KİLİTLEME GÜCÜ / CLAMPING FORCE	KN	1200	1600	2000	2600	3200	4000	4800
AÇMA STROKU / OPENING STROKE	MM	360	420	480	530	600	670	770
PLAKA ÖLÇÜLERİ / PLATEN SIZE	MMXMM	600 x 600	670 x 670	765 x 765	840 x 840	940 x 940	1050 x 1050	1115 x 1115
KOLON ARASI / SPACE BETWEEN TIE BARS	MMXMM	410 x 410	460 x 460	510 x 510	580 x 580	660 x 660	730 x 730	810 x 810
AZAMİ AÇIKLIK / MAXIMUM DAY LIGHT	MM	810	920	1030	1130	1260	1420	1590
KALIP KALINLIĞI (MİN. VE MAKS.) / MOLD THICKNESS (MIN-MAX)	MM	145 - 450	160 - 500	180 - 550	195 - 600	220 - 660	250 - 750	310 - 820
İTİCİ STROKU / HYDRAULIC EJECTION STROKE	MM	120	140	150	180	180	215	250
İTİCİ GÜCÜ / HYDRAULIC EJECTION FORCE	KN	42	42	67	77	77	111	111
İTİCİ ADEDİ / NUMBER OF EJECTOR		5	5	5	13	13	13	13
<b>GÜÇ ÜNİTESİ / POWER UNIT</b>								
SİSTEM BASINCI / SYSTEM PRESSURE	MPA	17,5	17,5	17,5	17,5	17,5	17,5	17,5
POMPA MOTOR GÜCÜ / PUMP MOTOR	KW	11	15	18,5	30	30	37	45
ISITMA KAPASİTESİ / HEATING CAPACITY		10,6	13,6	17,6	22,3	23	25,1	35,6
SICAKLIK KONTROL BÖLGESİ ADEDİ / NUM. OF TEMP. CTRL ZONE		4	4	4	5	5	5	5
<b>GENEL ÜNİTE / OVERALL</b>								
KURU ÇEVİRİM SÜRESİ / DRY CYCLE TIME	Sn	1,9	2,1	2,2	2,3	2,4	2,8	3,4
YAĞ TANKI HACMİ / TANK VOLUME	L	185	245	390	440	525	640	800
EBATLAR / DIMENSIONS	MXMXM	4,4x1,2x1,9	4,8x1,3x1,9	5,7x1,4x2,2	6,1x1,5x2,2	6,7x1,6x2,3	7,7x1,7x2,5	8,4x1,9x2,3
AĞIRLIK / WEIGHT	TON	3,6	4,5	6,3	9,1	11	15	19



## FORSTAR BAKALİT SERİSİ TEKNİK ÖZELLİKLER

ÖZELLİKLER	BİRİM	KT90VPET	KT120VPET	KT160VPET	KT200VPET	KT260VPET	KT320VPET
<b>ENJEKSİYON ÜNİTESİ / INJECTION UNIT</b>							
VİDA ÇAPI / SCREW DIAMETER	MM	38	48	53	60	66	74
TEORİK ENJEKSİYON HACMI / THEORETICAL INJECTION VOLUME	CM3	212	380	518	777	1094	1483
ENJEKSİYON AĞIRLIĞI (PET) / THEORITICAL SHOT VOLUME (PET)	GRAM	252	452	616	924	1301	1764
ENJEKSİYON BASINCI / INJECTION PRESSURE	MPA	192	163	173	169	180	177
VİDA STROKU / SCREW STROKE	MM	187	210	235	275	320	345
<b>KİLİTLEME ÜNİTESİ / CLAMPING UNIT</b>							
KİLİTLEME GÜCÜ / CLAMPING FORCE	KN	900	1200	1600	2000	2600	3200
AÇMA STROKU / OPENING STROKE	MM	330	360	420	480	530	600
PLAKA ÖLÇÜLERİ / PLATEN SIZE	MMXMM	520X520	600X600	670X670	765X765	840X840	940X940
KOLON ARASI / SPACE BETWEEN TIE BARS	MMXMM	360X360	410X410	460X460	510X510	570X570	660X660
AZAMİ AÇIKLIK / MAXIMUM DAY LIGHT	MM	690	810	920	1030	1130	1260
KALIP KALINLIĞI (MİN. VE MAKS.) / MOLD THICKNESS (MIN-MAX)	MM	130-360	145-450	160-500	180-550	195-600	220-660
İTİCİ STROKU / HYDRAULIC EJECTION STROKE	MM	100	120	140	150	180	180
İTİCİ GÜCÜ / HYDRAULIC EJECTION FORCE	KN	34	42	42	67	77	77
İTİCİ ADEDİ / NUMBER OF EJECTOR		5	5	5	5	13	13
<b>GÜÇ ÜNİTESİ / POWER UNIT</b>							
SİSTEM BASINCI / SYSTEM PRESSURE	MPA	17.5	17.5	17.5	17.5	17.5	17.5
POMPA MOTOR GÜCÜ / PUMP MOTOR	KW	9	11	15	18.5	22	30
ISITMA KAPASİTESİ / HEATING CAPACITY	KW	12.5	12.5	12.5	12.5	12.5	12.5
SICAKLIK KONTROL BÖLGESİ ADEDİ / NUM. OF TEMP. CTRL ZONE		2	2	2	2	2	2
<b>GENEL ÜNİTE / OVERALL</b>							
TANKI HACMİ / TANK VOLUME	L	175	190	250	365	435	545
EBATLAR / DIMENSIONS	MXMXM	4.0X1.1X1.8	4.1X1.2X1.9	4.7X1.3X1.9	5.2X1.4X2	6.1X1.4X2.2	6.3X1.6X2.3
AĞIRLIK / WEIGHT	TON	2.9	3.7	4.5	6.2	9	11



## FORSTAR PVC SERİSİ TEKNİK ÖZELLİKLER

ÖZELLİKLER	BİRİM	KT90V	KT120V	KT160V	KT200V	KT260V	KT320V	KT400V	KT480V	KT560V
<b>ENJEKSİYON ÜNİTESİ / INJECTION UNIT</b>										
VİDA ÇAPI / SCREW DIAMETER	MM	35-41	41-45	45-51	51-60	60-66	66-74	74-82	82-88	82-88
TEORİK ENJEKSİYON HACMİ / THEORETICAL INJECTION VOLUME	CM <sup>3</sup>	156-213	247-297	334-429	480-664	777-941	1094-1376	1483-1822	2112-2432	2112-2432
ENJEKSİYON AĞIRLIĞI (PET) / THEORITICAL SHOT VOLUME (PET)	GRAM	193-264	306-368	414-533	595-823	965-1169	1359-1709	1822-2259	2618-3015	2618-3015
ENJEKSİYON BASINCI / INJECTION PRESSURE	MPA	185-135	166-138	185-144	187-134	169-140	180-143	177-144	174-151	174-151
UZUNLUK/ÇAP ORANI - L/D RATIO		22:01	22:01	22:01	22:01	22:01	22:01	22:01	22:01	22:01
VİDA HIZI / SCREW SPEED	RPM	152-132	164-131	163-109	137-85	122-91	111-88	107-89	111-87	135-90
VİDA STROKU / SCREW STROKE	MM	162	187	210	235	275	320	345	400	400
<b>KİLİTLEME ÜNİTESİ / CLAMPING UNIT</b>										
KİLİTLEME GÜCÜ / CLAMPING FORCE	KN	900	1200	1600	2000	2600	3200	4000	4800	5600
AÇMA STROKU / OPENING STROKE	MM	330	360	420	480	530	600	670	770	835
PLAKA ÖLÇÜLERİ / PLATEN SIZE	MMXMM M	520X520	600X600	670X670	765X765	840X840	940X940	1050X1050	1115X1115	1220X1220
KOLON ARASI / SPACE BETWEEN TIE BARS	MMXMM M	360X360	410X410	460X460	510X510	580X580	660X660	730X730	810X810	855X855
AZAMİ AÇIKLIK / MAXIMUM DAY LIGHT	MM	690	810	920	1030	1130	1260	1420	1590	1685
KALIP KALINLIĞI (MİN. VE MAKS.) / MOLD THICKNESS (MIN-MAX)	MM	130-360	145-450	160-500	180-550	195-600	220-660	250-750	310-820	330-850
İTİCİ STROKU / HYDRAULIC EJECTION STROKE	MM	100	120	140	150	180	1800	2155	250	250
İTİCİ GÜCÜ / HYDRAULIC EJECTION FORCE	KN	34	42	42	67	77	77	111	111	166
İTİCİ ADEDİ / NUMBER OF EJECTOR		5	5	5	5	13	13	13	13	13
<b>GÜÇ ÜNİTESİ / POWER UNIT</b>										
SİSTEM BASINCI / SYSTEM PRESSURE	MPA	17.5	17.5	17.5	17.5	17.5	17.5	17.5	17.5	17.5
POMPA MOTOR GÜCÜ / PUMP MOTOR	KW	11	11	14	17.5	22	30	37	45	45
ISITMA KAPASİTESİ / HEATING CAPACITY		9.5	10.6	13.9	18	18.8	23.5	25	35	35
SICAKLIK KONTROL BÖLGESİ ADEDİ / NUM. OF TEMP. CTRL ZONE		4	4	4	4	5	5	5	5	6
<b>GENEL ÜNİTE / OVERALL</b>										
KURU ÇEVİRİM SÜRESİ / DRY CYCLE TIME	Sn	1.5	1.9	2.1	2.2	2	2.4	2.8	3.4	4
YAĞ TANKI HACMİ / TANK VOLUME	L	175	190	250	365	435	545	620	750	800
EBATLAR / DIMENSIONS	MMXMM	3.9X1.1X1.8	4.4X1.2X1.9	4.6X1.3X1.9	5.5X1.4X2.0	5.9X1.5X2.2	6.4X1.6X2.3	7.3X1.7X2.5	8.1X1.9X2.3	8.6X2X2.3
AĞIRLIK / WEIGHT	TON	2.9	3.7	4.5	6.2	9	11	16	20	22

CE FORSTAR®



## BÜYÜK GRAMAJLI ENJEKSİYON MAKİNALARI



4 KG - 250 KG ARASI ÜRÜNLER İÇİN

\* Makine Alırken  
Arkasındaki  
Servis ve Desteğin  
Güven Veren Firma  
Tarafından Verildiğine  
Dikkat Edin.



Sektörde  
Tecrübeli  
Güvenilir  
Firma

Yenidoğan Mahallesi Abdi İpekçi Caddesi: No: 14/A  
Bayrampaşa / İSTANBUL  
TEL.: (0212) 544 70 44 - CEP: (0532) 293 73 70  
www.mbkmakina.com.tr

**MBK MAKİNA**  
Plastik Makina San.Tic.Ltd.Şti.